**DESCRIPTION:**

When it comes to bolt lock seals, our **STEADYSEAL** is among the best in the world. The ring which blocks the pin is automatically incorporated inside the cylinder. After the pin is put into place the polycarbonate part of the capsule is electronically welded and the ring cannot be touched for the outside. **Any tampering attempts will destroy the seal.**

**RFID SECTION**

° The RFID inserted tag can be mainly used in 2 ways :

- ° Use the tag as an unique ID number (maybe the one not encrypted)
- ° Use the tag as a logistics data storage: it is possible, infact, to write on tag's memory time and date of locking, name of the starting port, goods type etc..

Main technical details of **E-STEADYSEAL** (we should say of its inlayed tag) :

**“A” Model**

**Small data storage (1024 bits) about 100 characters.**

- RF protocol ISO15693
- Integrated Circuit(IC) ICode SLI 1024 bit ; Read/Write
- Memory EEPROM
- Operating Frequency 13.56 MHz
- Protection IP68
- Operating temp. -20°C to +85°C
- Storage temp. -20°C to +85°C
- Resistance harsh factory environment

**“B” Model**

**Big data storage (1024 bytes) about 1000 characters**

- RF protocol ISO1443A
- Integrated Circuit(IC) Mifare series 1024 byte; Read/Write
- Memory EEPROM
- Operating Frequency 13.56 MHz
- Protection IP68
- Operating temp. -20°C to +85°C
- Storage temp. -20°C to +85°C
- Resistance harsh factory environment

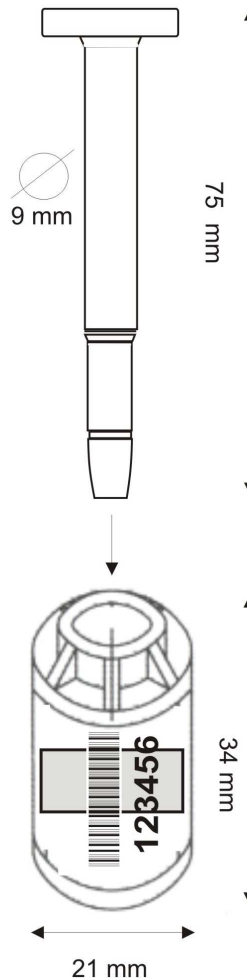
We can produce customized versions with other chip types (depending on the quantity)

Reading distance with a readers we go twill be of close vicinity (contact or a few cm)  
With large gates we can reach a distance of a few mt. (needs to be verified on site)

**CERTIFICATIONS:**

**(mechanical parts)**

° Compliant with ISO/PAS 17712  
HSS (high security seal)  
WITH ISO/PAS 17025  
LAB APPROVED



AVAILABLE COLOURS					
FLUORESCENT COLOURS					

**PACKING:**

200 seals per carton  
Carton dimensions: 32x22x12cm  
(12.6"x8.66"x4.72")  
Carton weight: 12 kg (26.46lbs)

