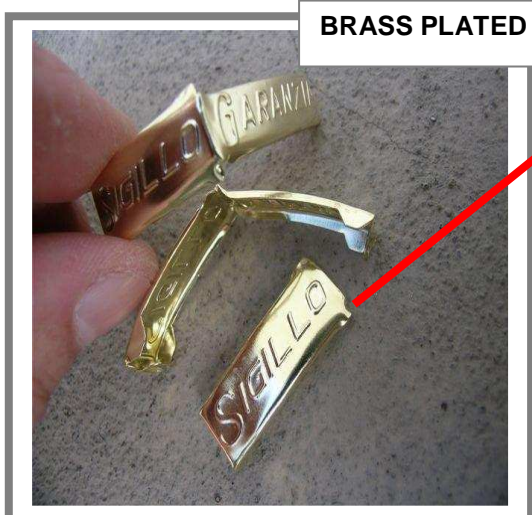


SHINY STEEL



BRASS PLATED STEEL

**DESCRIPTION:**

°These seals can be used to identify and guarantee the quality control of individual packs. They are easily applied and sealed by hand.

DIMENSIONS:

Width : 10 mm
 Length : 55 (open)
 Length : 27 (closed)

CUSTOMISATION:

°The seal can be printed in relief with the wordin g "Sigillo di sicurezza" security seal, company/factory logo, the CEE mark or other relevant information.

MATERIAL:

°shiny galvanised steel
 °brass plated steel

OTHER PRODUCTS AVAILABLE:

°MATCRIMP 048 MM/BG 55x10 mm
 °MATCRIMP 048 34x8 mm
 °CRIMSEAL
 °PLOMBEX 9 mm
 °PLOMBEX 13 mm

OPEN

55 mm

**LOCKED**

(side a)

**LOCKED**

(side b)

**PACKING:**

One carton : 2.000 pcs
Carton sizes: 28x16x22 cm
Weight: 2,7 kg