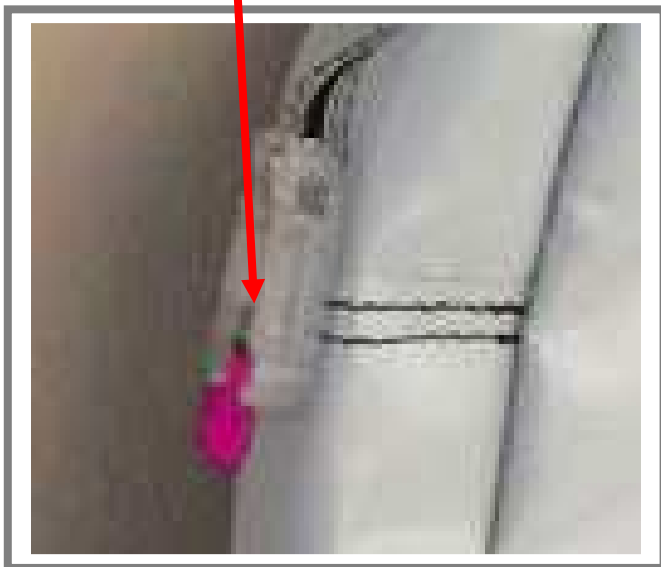




can be closed with a specific security seals



#### DESCRIPTION:

- ° Large capacity security bag.
- This bag is designed for a variety of uses. It is perfect for any association, business or banking needs.
- ° Handle made with a large and resistant wrap.
- ° “LONDON” is with white or black webbed handles and supports heavy weights.
- ° “LONDON” is designed with an outside access transparent window and inside access transparent window.

#### SIZES:

Art: **London 10** Cm: 35x10x30h

Art: **London 15** Cm: 35x15x30h

Art: **London 20** Cm: 35x20x30h

° Standard dimensions of “LONDON” bag can be modified on customer's request.

#### CUSTOMISATION:

- ° SERIGRAPHIC PRINT.
- ° One, two or three colours print.
- ° Logos available upon request.

#### MATERIAL:

Nylon 840

Nylon 210

#### ADDITIONAL INFO:

- ° “LONDON” bag can be closed with a bag security seal called **ZIPSTOP**.
- This is a plastic seal to stop the closure of the security bag when the head is inserted into the zip, the zip is blocked and to move the zip it is necessary to break the seal.

° “ZIPSTOP” is a consequentially numbered security seal.

° BAR CODE is Also available

° The only way to open the bag is to break the security seal.

